

INSTALLATION INSTRUCTIONS

WARNING! RISK OF ELECTRIC SHOCK! DISCONNECT POWER AT FUSE OR CIRCUIT BREAKER BEFORE INSTALLING OR SERVICING!

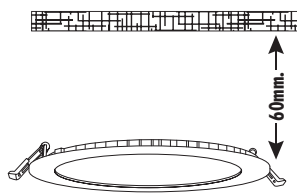
STEP #1



POWER OFF

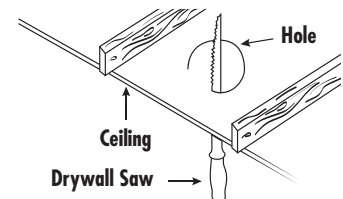
TURN OFF POWER AT CIRCUIT BREAKER to prevent risk of electric shock.

STEP #2



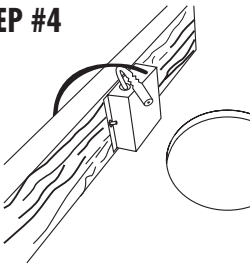
Allow adequate space in ceiling cavity for heat dissipation. Height of cavity should be at least 60mm (2.4")

STEP #3



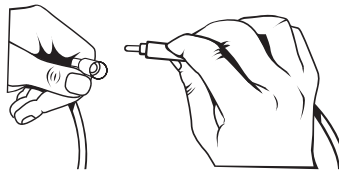
Carefully make a fixture installation hole in the ceiling using a drywall saw.

STEP #4



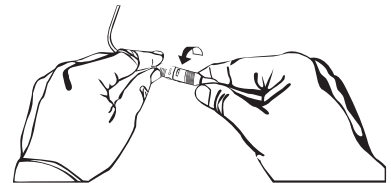
Have qualified Electrician install supplied electrical box.

STEP #5



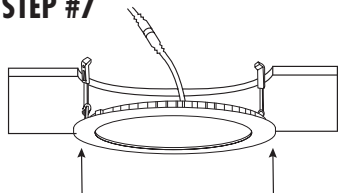
Connect male electrical lead from the downlight with the female lead from the electrical box.

STEP #6



Once inserted, make sure connection is secure by twisting until tab is locked in slot.

STEP #7



Hold to clip springs vertically, and slowly insert the fixture into the hole in the ceiling. The fixture will be successfully installed when it is flush against the ceiling.

STEP #8



POWER ON

Restore power to recessed fixture at circuit breaker. Enjoy energy-efficient LED lighting, and up to 80% energy savings vs. equivalent incandescent bulbs.